

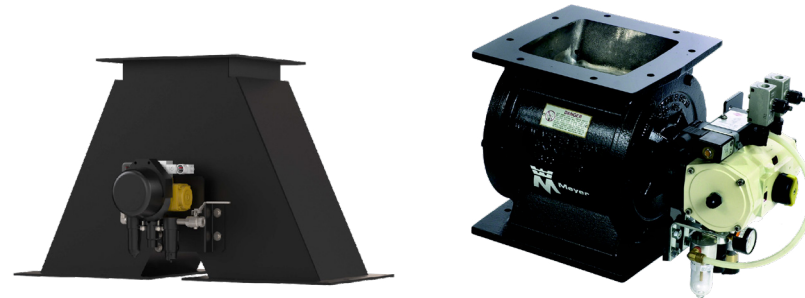
GRAVITY DIVERTER AND PLUG VALVES

Diverter Valves:

- High temperature designs to 450° F
- Dust-tight to the outside
- Multiple sizes 4" – 24"
- Mild steel construction standard, stainless and abrasion resistant steel also available
- Custom features include ceramic lining

Plug Valves:

- Provide a positive seal of bulk material
- High flow rates achieved by straight flow through design
- Controlled shut-off with unique engineered plug rotor
- Electric, air or manual operation



Gravity Diverter

Rotary Plug Valve



VACUUM & PRESSURE BLOWER PACKAGES

- Standard packages to 300 HP
- Custom engineered to specic operating conditions
- High pressure 20 psi and vacuum 16" Hg designs

REPAIR SERVICES



All brands of rotary airlock valves and blowers serviced



Free inbound shipping and estimates



12-month warranty



Re-machine to OEM specification



ISO 9001:2015 CERTIFIED

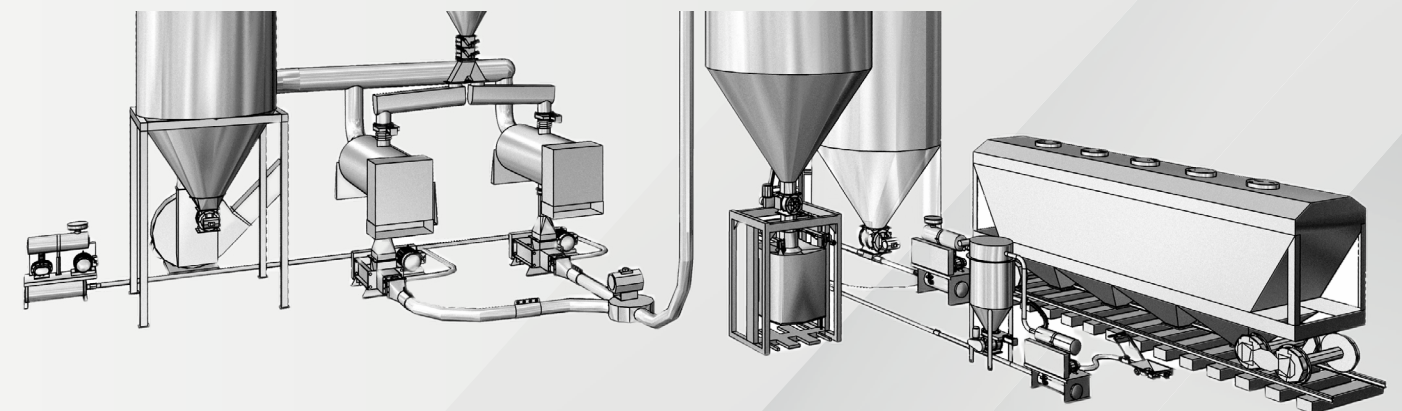
Meyer Industrial
1700 Franklin Blvd.
Libertyville, IL 60048 USA

P: (847) 918-0111
F: (847) 918-8183

sales@wmwmeyer.com
www.meyerindustrial.com

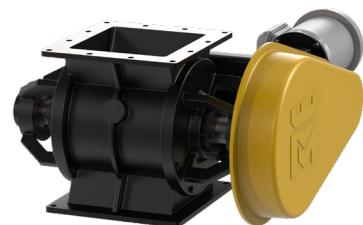


PROCESS SYSTEM COMPONENTS

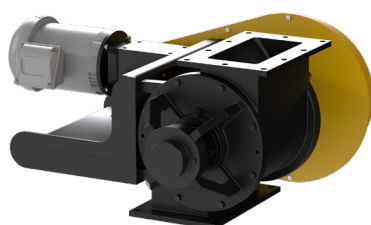


ROTARY AIRLOCK FEEDERS

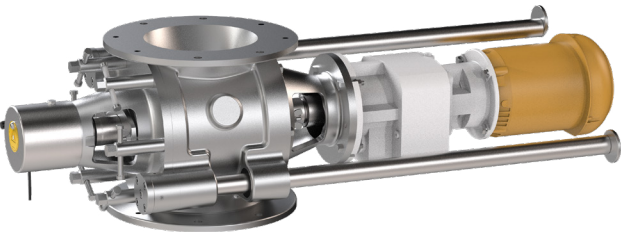
- Heavy Duty Configuration
- USDA and FDA sanitary applications
- NFPA explosion designs 68, 69
- Custom rotors for precise metering
- W.E.A.R. abrasive material handling airlocks
- High temperature designs (1700°)
- High-pressure designs



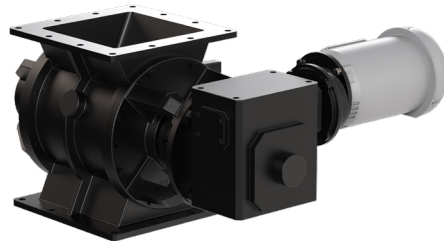
HDX Heavy Duty Extra-Tough
(Squire and Round Flanges)



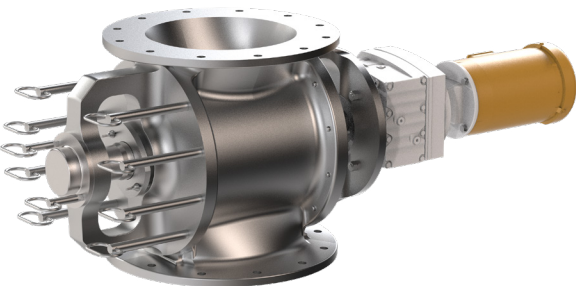
HDX Heavy Duty Side Entry



Klean-in-Place II Series



HDX Direct Drive



Kwik-Klean®



W.E.A.R. Valve

SLIDE GATE VALVES

- Gates are dust-tight to the outside
- Knife action to cut through a standing column of material
- Fast acting opening and closing time
- Manual or pneumatic operation



T-Bar Slide Gate

SCREW PUMPS

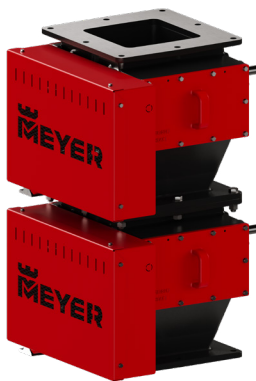
- Screw technology eliminating conveying air leakage
- Increased conveying rates with less air
- No conveying air leakage when running empty
- Extended bearing life, fewer system shutdowns
- Highly abrasive resistant coatings



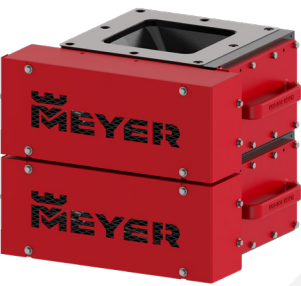
Screw Pump

DOUBLE FLAPGATE VALVES

- Ideal for highly abrasive application
- Handle exceptionally abrasive or corrosive materials
- Pneumatic, electro-mechanical or gravity counterweight actuation
- High temperature designs to 1700° F



MPFTA Double Flap Gate
Airlock Valve



MPSA Double Flap Gate
Airlock Valves