



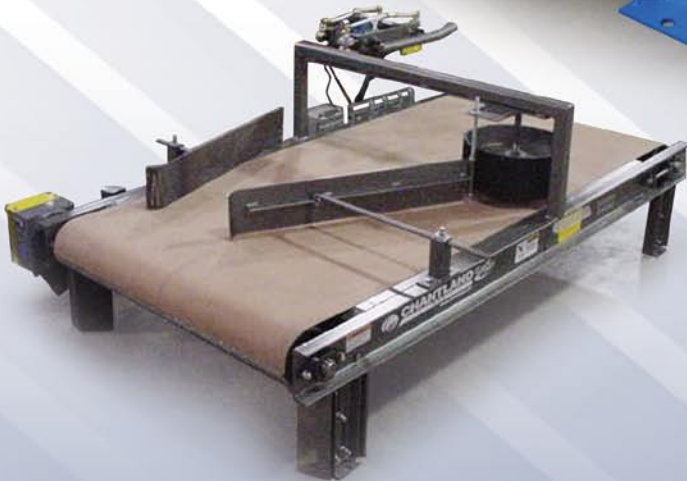
# CHANTLAND

M H S

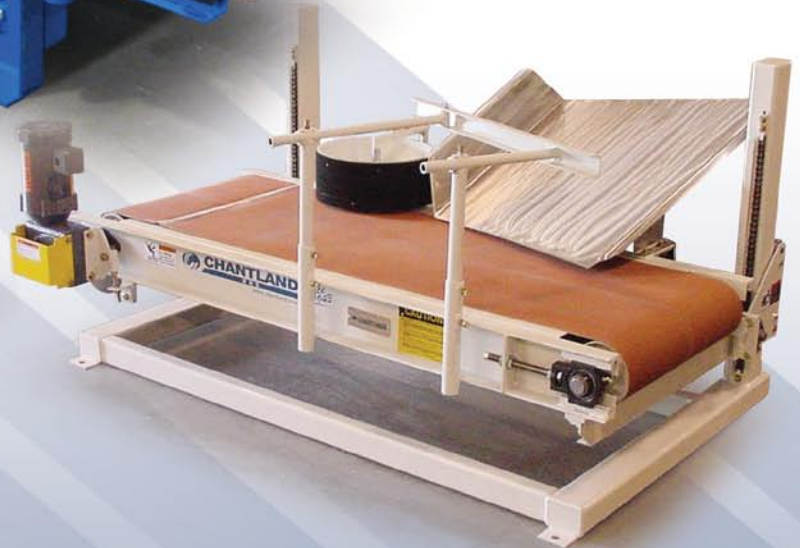
Material Handling Solutions

Since  
1943

## BAG TURNER 4216 BELT CONVEYOR



Optional pneumatic knock-down/turner



Optional vertical lift



Automatically transfers filled bags from an upright position to a horizontal bottom first position.

# SOLUTIONS

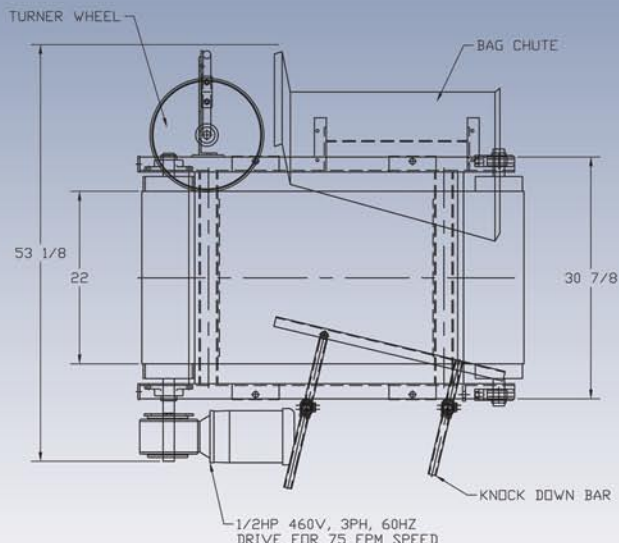
[WWW.CHANTLAND.COM](http://WWW.CHANTLAND.COM)

BAG FILLERS ♦ CONVEYERS ♦ PALLETIZERS ♦ SYSTEMS



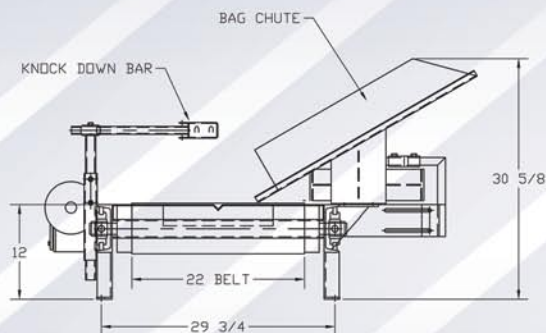
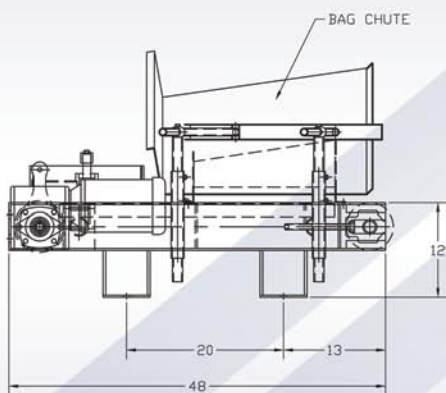
# BAG TURNER

## 4216 BELT CONVEYOR



### NOTES:

- ◆ Must specify either right or left hand design when ordering. (Right hand designs are shown to left and on cover)
- ◆ When adding a vertical lift the turner must be minimum 5'-0" long UNLESS the chute and drive are on the stanchion side of the vertical lift, then turner must be minimum 6'-0" long.
- ◆ Vertical lift provides 15"-34" top of belt height range.



### DESIGN FEATURES:

- ◆ Fully adjustable hardware to accommodate different bag sizes.
- ◆ Stainless steel bag slide for smooth transition from upright position.
- ◆ Turn wheel to assist bag realignment.
- ◆ V-guide molded to underside of belt for positive tracking.
- ◆ Lagged drive pulley for maximum belt traction.
- ◆ Hollow output drive eliminates chain maintenance.
- ◆ NEMA 12 electrical enclosure. 230/460 V., 60 Hz., 3 Ph.
- ◆ Structural channel frame with heavy formed steel bed.
- ◆ Industrial enamel finish.

### AVAILABLE FEATURES:

- ◆ Less motor & electrical for slave driving from a powered conveyor (available on standard units only).
- ◆ Available as an infeed unit only without the bag turning hardware (recommend using roughtop belt).
- ◆ Adjustable supports.
- ◆ Manual or electrical vertical lift assembly.
- ◆ Casters with brakes.
- ◆ 4216-5: Pneumatic bag knock down / turner design. Used for loose filled product which can settle to bottom of bag, such as dog food.

BAG FILLERS

CONVEYORS

PALLETIZERS

SYSTEMS

PO Box 279, Humboldt, Iowa, U.S.A. 50548 / Ph. 515.332.4045 Fax 515.332.1502

[www.chantland.com](http://www.chantland.com)