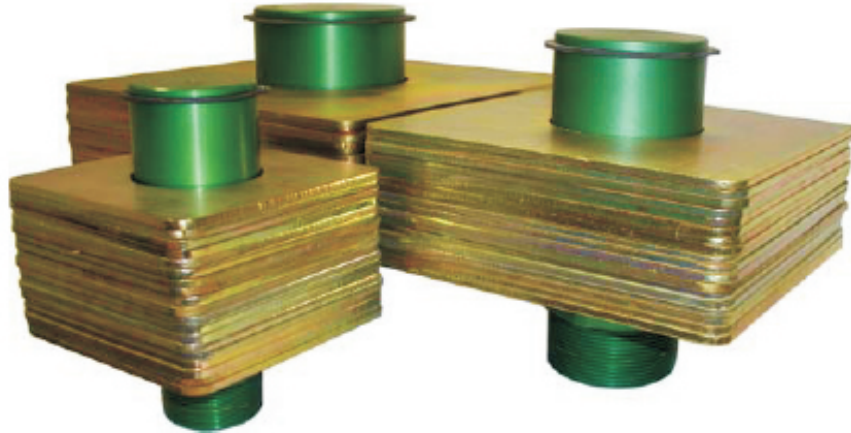


Weighted Pressure Relief Valves

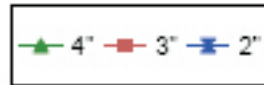
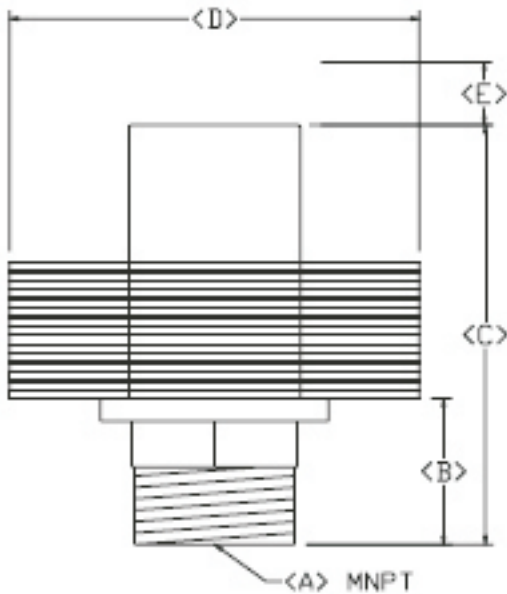
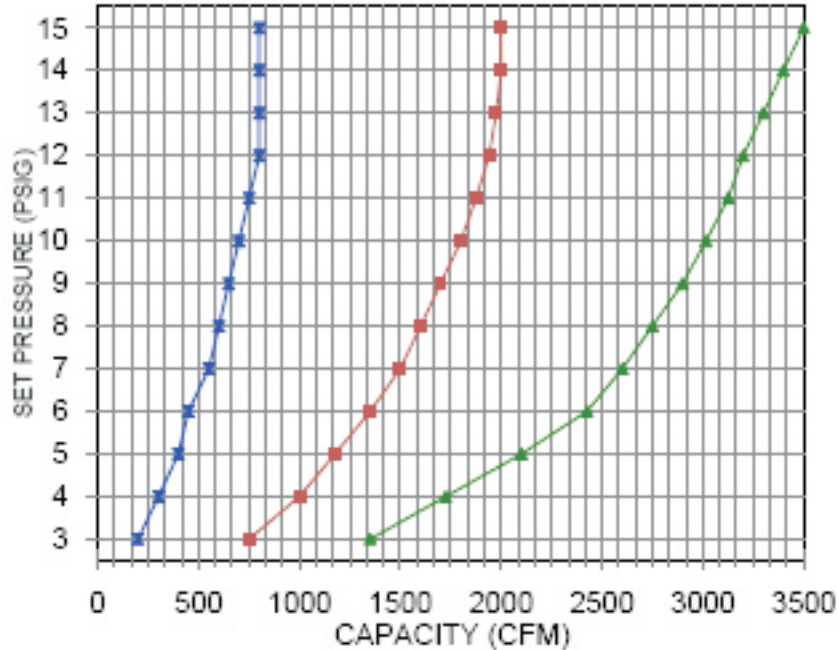


We offer our weighted pressure relief valve 2", 3", and 4" sizes for capacities through 3400 CFM. We couple an elementary design with a high quality anodized and heat-treated aluminum construction to offer reliable performance and simple calibration. Proven design ensures years of reliable service.

Features Include:

- Anodized Aluminum construction for years of trouble-free service;
- 2", 3", and 4" models have standard MPT connections;
- Valves available from 1 PSIG through 29 PSIG with a calibrated ½ PSIG increment per removable disc;
- Simple operation. Line pressure naturally displaces the weighted cap upwards and off the valve seat. As the pressure increases, the valve exposes more vent area for higher flow;
- High flow-through capacity;
- Valve automatically seats itself when the pressure is removed;
- All operating surfaces are machined and the entire valve is heat treated and anodized for the highest quality;
- Minimal maintenance required;
- Simple method of opening and closing insures that the valve is virtually chatter-free;
- Retainer ring ensures valve settings are not tampered with.

Weighted Pressure Relief Valves



Dimensions in Inches

	2"	3"	4"
A	2"	3"	4"
B	2.25	3.25	3.25
C	7.75	8.75	9.25
D*	8.50	12.75	16.50
E**	9.25	10.00	11.00

*0.5 PSIG Increment wghts diagonal dimension

**Dimension when valve is fully open

Lorenz Conveying Products

USA 1-800-263-7782 Canada 1-800-263-1942
905-372-2240

www.lorenz.ca

sales@lorenz.ca