

# MAGNETS FOR THE SLING, RIGGING & FABRICATION INDUSTRIES

Lift Magnets, Sheet Handlers, Retrievers, Welding Grounds, Clamps & More

**MAG-MATE®**

## POWERLIFT® MAGNETS

These compact yet powerful Rare Earth lift magnets can be used on flat or round surfaces and contain an internal release ON/OFF device that does not contact or damage the surface of the part being lifted.



## VERSALIFT™ MAGNETS

Compact and powerful Rare Earth permanent lift magnet for use on flat or round surfaces. Contains an internal On/Off release device that does not contact or damage the surface of the part. More features than other lifts and manufactured in the USA (USA M.A.D.E.™).



Shown with optional Vertical Lifting Lug attachment

## DYNAMICLIFT™ MAGNETS

These lightweight and powerful Rare Earth permanent lift magnets, featuring Magswitch® technology, can be used on flat or round surfaces and contain an internal release On/Off device that does not contact or damage the surface of the part being lifted. DynamicLifts™ have superior holding on thin gauge ferrous metals. A remote operated version is available.



## CREATIVE LIFT® MAGNETS

Permanent ceramic lift magnets are ideal for handling flat steel plates, die castings, forgings, etc. They eliminate the need for clamping devices, slings or chains.



## BASICLIFT™ MAGNETS

Permanent ceramiclift magnet for a broad range of lifting applications. The Basic Lift magnet has a full width cam release and a tall lift lug for easy use with crane hooks and sling.



## CHECK OUT OUR OTHER LIFTING MAGNET SOLUTIONS



**INDUSTRIAL MAGNETICS, INC.**

1385 M-75 South • Boyne City, MI 49712 • P: 888.582.0822 • F: 231.582.2704 • WWW.MAGNETICS.COM

MAG-MATE® is a registered trademark of INDUSTRIAL MAGNETICS, INC.

# MAGNETS FOR THE SLING, RIGGING & FABRICATION INDUSTRIES

Lift Magnets, Sheet Handlers, Retrievers, Welding Grounds, Clamps & More

**MAG-MATE®**

## WELDING ANGLES

We offer a full line of magnetic welding angle products for welders. From our Perfect 90° welding angles to our On/Off Adjustable Angle that allows for welding flat or round stock at almost any angle. Our array of welding angles are ideal for the welder that needs fast setup and accurate holdings of steel parts.



## WELDING GROUNDS

Our line of magnetic welding ground products are ideal for welders that need fast set-up & excellent electrical grounding. They contain powerful magnetic circuits keep the ground securely attached providing constant electrical ground contact. Available in our standard permanent magnetic base grounds to our newest On/Off Rare Earth grounds that work on flat or pipe.



## ON/OFF MAGSQUARES & HOOKS

ON/OFF Rare Earth magnets are extremely powerful, easily allows debris to fall away and can be used on flat or round steel or cast iron. Non-marring hold.

### MagSquares

Simple, fast work-holding on multiple sides. Eliminate the need for tedious clamping. Pre-Tapped holes on all sides for mounting jigs, fixtures, forms, etc.

### Magnetic Hanging Hooks

Perfect for temporary holding of lines, hoses, lights, tools and more. Quickly secure and hold to just about anything, anywhere.



## SHEET HANDLERS

Lift or move sheets, plates, hot or oily parts. Works perfect for burn tables, storage racks and transferring sheets from one process to another in a vertical or horizontal position. Protects workers from nicks, cuts, burns and slivers. No power required.



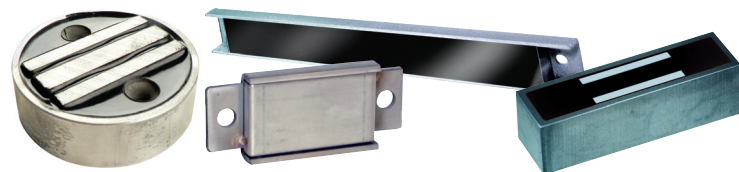
## CUTTING TABLE TOOLS

Cutting table magnets are perfect for retrieving those hot or oily parts with speed and precision. Find the exact tool you are looking for to move those steel parts with a number of products in all shapes and sizes.



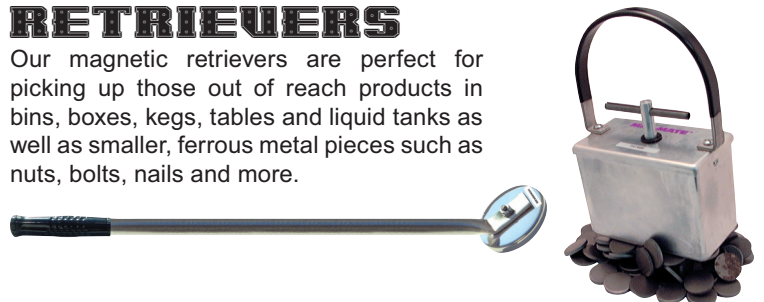
## FIXTURE MAGNETS

These alternatives to typical clamping devices provide fast part handling for repetitive applications on press brakes, drill presses, shears, de-burring stations, stamping and spot welding equipment.



## RETRIEVERS

Our magnetic retrievers are perfect for picking up those out of reach products in bins, boxes, kegs, tables and liquid tanks as well as smaller, ferrous metal pieces such as nuts, bolts, nails and more.



# INDUSTRIAL MAGNETICS, INC.

1385 M-75 South • Boyne City, MI 49712 • P: 888.582.0822 • F: 231.582.2704 • WWW.MAGNETICS.COM

MGFab (05/11)

MAG-MATE® is a registered trademark of INDUSTRIAL MAGNETICS, INC.