



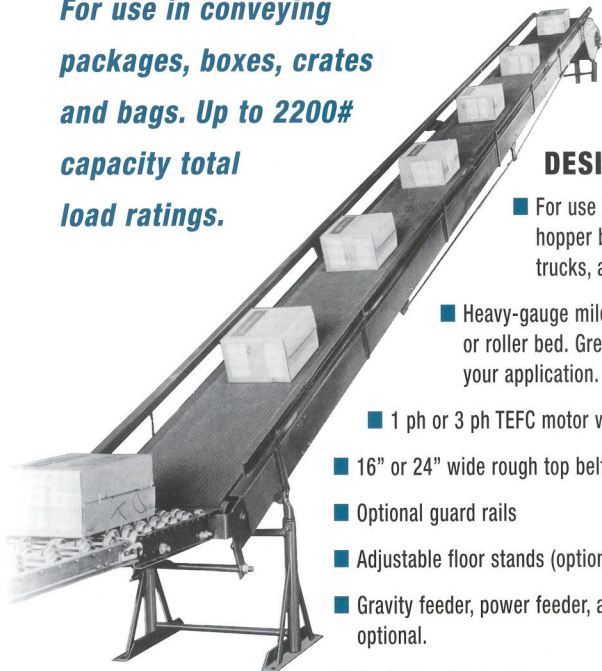
CHANTLAND

PVS

Material Handling Solutions

N-SERIES STATIONARY BELT CONVEYOR

*For use in conveying
packages, boxes, crates
and bags. Up to 2200#
capacity total
load ratings.*



DESIGN FEATURES:

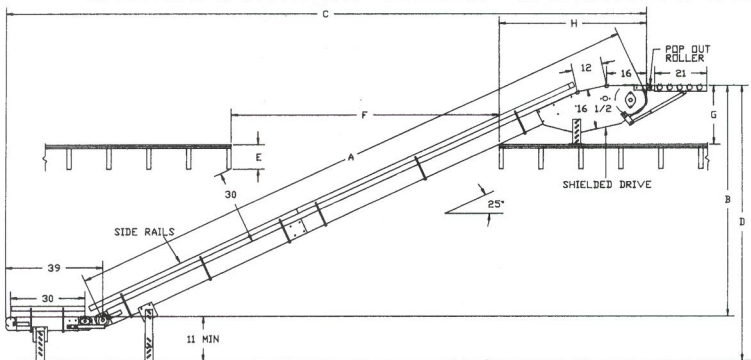
- For use in unloading bulk materials from hopper bottom rail cars, hopper bottom trucks, and wagons
- Heavy-gauge mild steel construction with slider bed or roller bed. Green industrial paint. Lengths to fit your application.
- 1 ph or 3 ph TEFC motor with gear reducer drive, (shielded).
- 16" or 24" wide rough top belt. Standard belt speed is 65 fpm.
- Optional guard rails
- Adjustable floor stands (optional)
- Gravity feeder, power feeder, and gravity discharge sections are optional.
- Available with double nose over discharge section for incline. Applications or straight discharge for horizontal applications.

SOLUTIONS

www.chantland.com

PACKERS • CONVEYORS • PALLETIZERS • SYSTEMS

N-SERIES STATIONARY BELT CONVEYOR

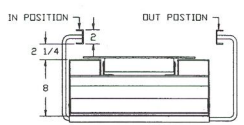
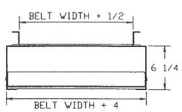


CONVEYOR LENGTH "A"	ACTUAL LIFT "B"	HORI. DISTANCE "C"
11'-0"	4'-0"	13'-6"
13'-3"	5'-0"	16'-6"
15'-6"	6'-0"	17'-9"
18'-0"	7'-0"	20'-0"
20'-3"	8'-0"	22'-0"
22'-6"	9'-0"	24'-0"
24'-10"	10'-0"	25'-0"
27'-11"	11'-0"	28'-3"
29'-10"	12'-0"	30'-6"
31'-10"	13'-0"	32'-6"
34'-3"	14'-0"	34'-6"
36'-4"	15'-0"	36'-9"
38'-10"	16'-0"	38'-10"
41'-0"	17'-0"	40'-10"
43'-3"	18'-0"	42'-10"

FLOOR "E"	OPENING "F"
8"	8'-2"
10"	8'-7"
12"	8'-11"
14"	9'-2"
16"	10'-0"

DISCHARGE "G"	OVERHANG "H"
18"	3'-11"
24"	5'-0"
30"	6'-0"
36"	7'-2"
42"	8'-2"

"D" = TOTAL LIFT; ADD RECEIVING AND DISCHARGE HEIGHT TO ACTUAL LIFT.



STANDARD SPECIFICATIONS:

- **FRAME:** formed 12-gauge mild steel with white corrosion resistant paint or 14-gauge #304 stainless steel construction
- **FRAME:** fabricated from 12 gauge sheet steel. Rigidly braced. Truss assemblies available on all units over 20 ft. Two types of discharge ends available. 2" dia belt return rollers.
- **DRIVE:** equipped with C-flange gear reducer drive with final chain drive to conveyor drive pulley. Bolt on C-flange motors, 1 phase or 3 phase, totally enclosed. 65 fpm standard belt speed, less electrical controls.

- **BEARINGS:** head and tail bearings are precision, heavy-duty, lubricated, ball bearing units with cast iron housings.
- **DRIVE & TAKEUP:** 8", 10", or 12" dia lagged drive pulley, depending on length and horsepower required. 5" tail pulleys. All pulleys are crowned. Standard screw takeup.
- **BELT:** top quality roughtop belt is standard
- **WEIGHTS:**

	Slider bed		Roller bed	
	16"	24"	16"	24"
10' Basic	610	715	610	715
Add per ft	20	25	26	35