



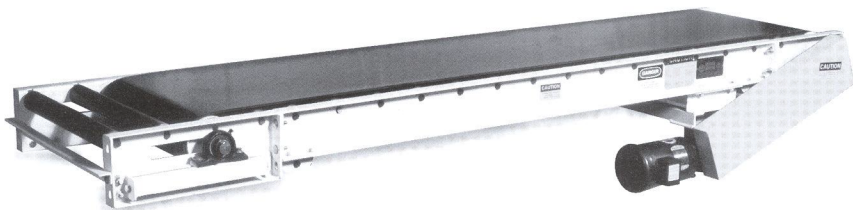
CHANTLAND

PVS

Material Handling Solutions

HDR-SERIES HEAVY-DUTY ROLLER BED CONVEYORS

*For use in conveying heavy packages,
boxes, crates, and bags. Quality
construction for industrial applications.*



DESIGN FEATURES:

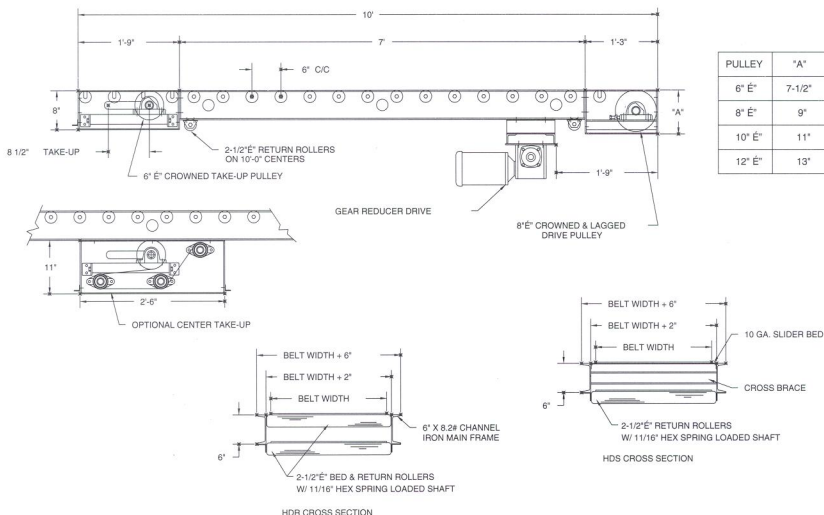
- 120# black PVC belt with cover one side. Belt widths to meet your requirements. Standard belt speed is 65 fpm.
- 6" X 8.2# channel iron main frame in lengths to meet your requirements
- Crowned and lagged drive pulley
- 2 1/2" dia X #11 ga. bed rollers with 11/16" hex spring-loaded shafts spaced on 6" centers. 540 lbs. maximum load rating per roller
- 3 ph TEFC bolt on C-flange motor with C-flange gear reducer drive (shielded)
- Available options include slider bed frame, center wrap drive, center take-up, power feeder, gravity feeder or discharge section, floor supports, and electrical controls

SOLUTIONS

www.chantland.com

PACKERS • CONVEYORS • PALLETIZERS • SYSTEMS

HDR-SERIES HEAVY-DUTY ROLLER BED CONVEYORS



STANDARD SPECIFICATIONS:

- **FRAMES:** 6" X 8.2# structural channel. Finished with two coats industrial paint
- **DRIVE:** Equipped with C-flange gear reducer drive with final chain drive to drive pulley. Bolt on C-flange motors, 65 fpm standard belt speed
- **BELT:** Standard belt is 120# black PVC with cover one side. Roughtop belt available. See price list
- **BEARINGS:** Head and tail bearings are precision, heavy-duty, lubricated, ball bearing units with cast iron housings
- **GUARDS:** Furnished at all necessary points for operator safety
- **CAPACITY:** See price list for various size drives.

OPTIONS:

- Center wrap drive
- Center take-up
- Power feeder
- Gravity feeder/discharge
- Supports
- Electrical controls

NOTE: 540 lbs. maximum load rating per roller