



CHANTLAND

PVS

Material Handling Solutions

HY-CAP STATIONARY BULK CONVEYOR



- Used to efficiently convey high capacities of fertilizers, grains, feeds, and other dry free flowing bulk materials.
- 10", 12", 16", 18", 20", 24", 30" or 36" wide belt with stainless steel lacing. Friction surface for horizontal applications, pattern top for incline applications. Standard belt speed is 400 fpm.
- 3 ph TEFC motor with reducer (shielded)
- Optional flared type receiving hopper
- Vulcanized lagged drive pulley
- Formed steel frame with 25 degree v-trough. Mild steel with corrosion resistant paint, or #304 stainless steel. Slider bed or roller bed in lengths to fit your application.
- Stainless steel takeup bolts

OTHER AVAILABLE OPTIONS INCLUDE:

- *Enclosed discharge spout*
- *Conveyor cover*
- *Weather tight receiving hopper*
- *V-groove wheels*
- *Belt skirting*
- *Spring tensioned belt scraper.*
- *Start/stop motor control with push-button station*

SOLUTIONS

www.chantland.com

PACKERS • CONVEYORS • PALLETIZERS • SYSTEMS

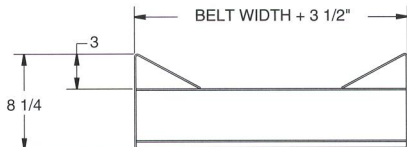
HY-CAP CONVEYOR STANDARD SPECIFICATIONS:

- **FRAMES:** frames are fabricated from 12 ga. sheet steel. Welded construction. 28 degree trough. Mild steel units painted white corrosion resistant paint. 20' can be spanned without supports.
- **BELT:** top quality friction surface belt, standard belt speed, 400 fpm. Smooth belt elevates to 25 degrees. Ruff top to 30 degrees. See price schedule.
- **POWER AND DRIVE:** single or 3 ph totally enclosed motors. Gear reducer drives.
- **HEAD AND IDLER PULLEYS:** Chantland-PVS hydro crown pulleys used. Shafts run in self-aligning ball

bearings. Screw type idler end takeups. Stainless steel takeup bolts standard. All drive pulleys lagged.

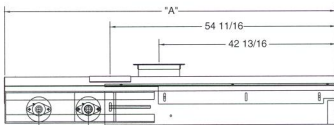
- **PULLEY SIZES:** 6" up to 36'; 8" up to 70'; 12" over 70' — depending on belt width
- **BELT WIDTHS:** 10", 12", 16", 18", 20", 24", 30" or 36"
- **HOPPERS:** 3 types available, for inside or outside applications. Model HC-20 is for outside use in connection with conveyor cover. Intake is field welded. See drawing below. Models HC-30 and HC-60 can be located at any position on conveyor. All are furnished with adjustable rubber skirting.

BELT SPEED	12" BELT GRAIN	12" BELT FERTILIZER 60# CU. FT.	16" BELT GRAIN	16" BELT FERTILIZER 60# CU. FT.
300 FPM	950 BPH	35 TPH	1200 BPH	45 TPH
400 FPM	1200 BPH	45 TPH	1600 BPH	59 TPH
500 FPM	1400 BPH	52 TPH	2000 BPH	75 TPH



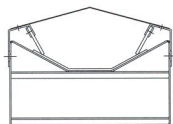
STANDARD OPEN BOTTOM "BOOSTER STYLE" FRAME
(Std. on 30" or wider belts)

NOTE: above capacities are based on uniform feed. Capacities will vary on different materials. If higher handling rates are needed, consult the factory. Chart is based on angles from horizontal to not over 15 degrees.



HC-20 ENCLOSED HOPPER

Drawing shows dimensions and construction. Use with conveyor cover.

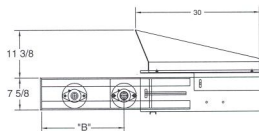


12' BELT

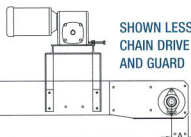
ENCLOSED CONVEYOR COVER
Fabricated from 14 ga. steel and bolted on.

MOD HC-30
FLARED HOPPER
24" wide at back,
30" long

CONVEYOR LENGTH	DIMENSION "A"	DIMENSION "B"
0 - 75'	80-1/4"	12"
75' - 150'	86-1/4"	18"



ADJUSTABLE BELT SKIRTING UNDER ALL HOPPERS



SHOWN LESS CHAIN DRIVE AND GUARD

NOTE: to get overall length of conveyor, take center to center distance plus A and B dimensions

CONVEYOR LENGTH	DIMENSION "B"	TAKE-UP STYLE
0 - 36'	3"	PLATE
0 - 75'	20"	ANGLE IRON
75' - 150'	26"	ANGLE IRON

PULLEY DIAMETER	DIMENSION "A"
6"	4"
8"	4"
12"	6"