



CHANTLAND

P V S

Material Handling Solutions

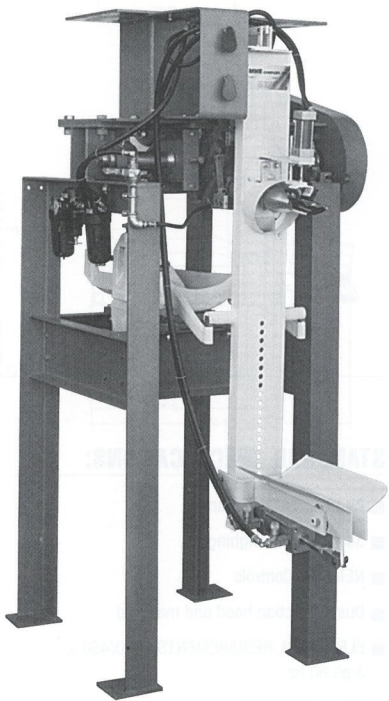
IMPELLER PACKER

SERIES 1070

MODELS 1071,
1072, 1073 & 1074

The series 1070 impeller packers are available in one, two, three and four spout units with a common frame, motor and drive. They are extremely rugged in construction and specifically designed for users who require multiple filling spouts yet want an economical machine to purchase and maintain.

These packers are ideal for cement, limestone, gypsum, stucco, fly ash and many other products. Fill rates range from 5 to 9 bags per minute on Model 1071 to over 20 bags per minute on Model 1074, depending on product and bag weights. Fill weight range is 25 lbs to 110 lbs. Weight accuracy is +/- 4 oz to 6 oz, depending on product characteristics.



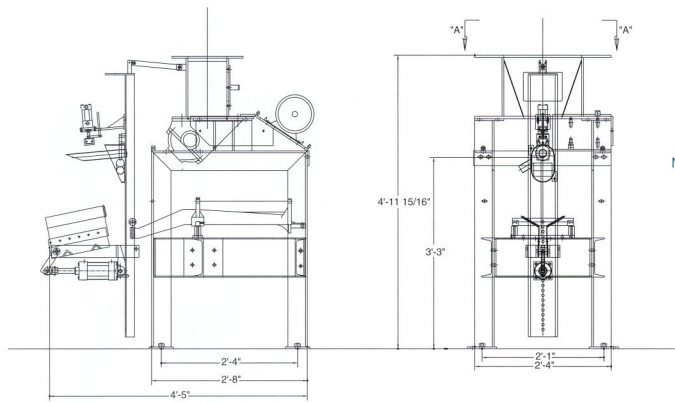
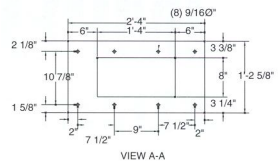
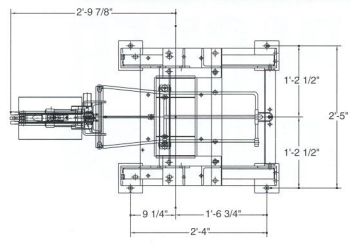
SOLUTIONS

www.chantland.com

PACKERS • CONVEYORS • PALLETIZERS • SYSTEMS

IMPELLER PACKERS SERIES 1070

MODELS 1071, 1072, 1073 & 1074



NOTE: Dimensions are in inches. Right-hand drive shown, left-hand drive available. Specifications subject to change without notice.

STANDARD SPECIFICATIONS:

- Air operated bag clamps
- Scale beam weighing
- NEMA 12 Controls
- Dust collection hood and manifold
- ELECTRICAL REQUIREMENTS: 230/460 v, 3 ph 60 hz
- AIR REQUIREMENTS: 1-1 1/2 cfm, 80 psi per spout
- CONTROLS: Pneumatic

APPROXIMATE SHIPPING WEIGHTS:

Model 1071	1000 lbs
Model 1072	2000 lbs
Model 1073	3000 lbs
Model 1074	4000 lbs

OPTIONS:

- Custom options upon request:
 - Automatic Bag Discharge:
 - Models 1071, 1072
 - Models 1073, 1074 standard
 - Automatic bag start
 - Load cell
 - 2 speed